

Spectrum® Glazes Inc.

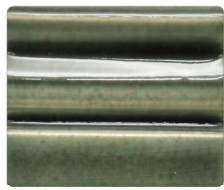
LEAD FREE
NON TOXIC*

900 Series Cone Low Stone Glazes

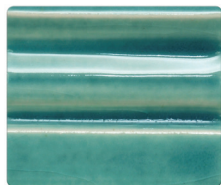
DINNERWARE SAFE
CONE 06/04



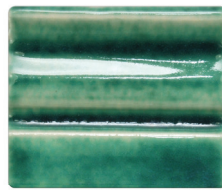
900 ①
Clear



901 ②
Evening Shadow



902 ②
Iceberg



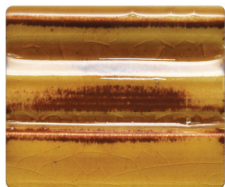
903 ②
Emerald



904 ①
Indian Summer



905 ①
Wheatfield



906 ①
Burnt Sugar



907 ①
Autumn Leaves



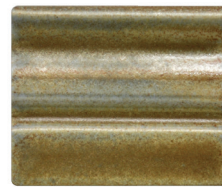
908 ①
Molten Stone



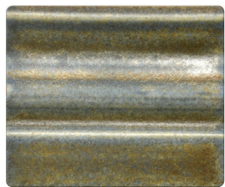
909 ①
Camel



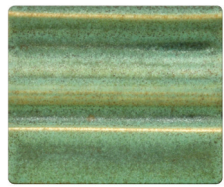
910 ①
Desert



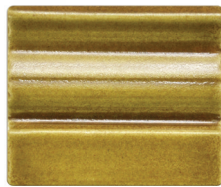
911 ①
Star Dust



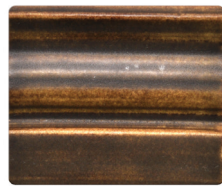
912 ②
Cloudy Sky



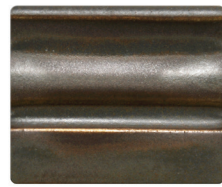
913 ②
Old Copper



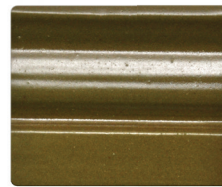
914 ①
Gator



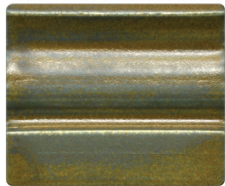
915 ①
Buffalo Hide



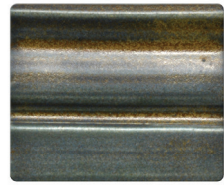
916 ①
Leather



918 ①
Olive Branch



919 ①
Forest Moss



920 ①
Midnight Sky



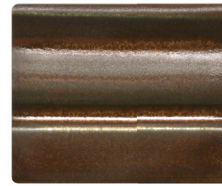
921 ①
Iron Earth



922 ①
Russet



923 ①
Hazelnut



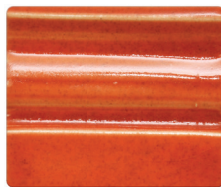
924 ①
Slate



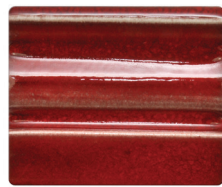
925 ①
Blush



926 ①
Lizard Skin



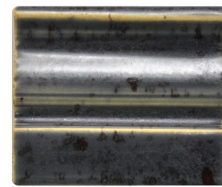
927 ⑤
Tuscan Sun



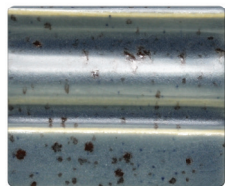
928 ⑤
Oxblood



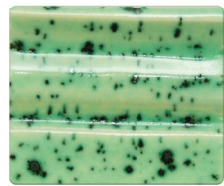
929 ①
Mocha



930 ①
Franciscan Gray



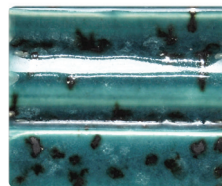
931 ①
Dove Gray



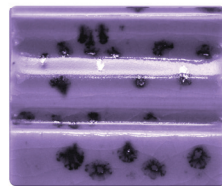
932 ②
Pistachio



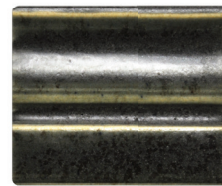
933 ⑤
Strawberry



934 ②
Speckled Turquoise



935 ①
Purple Haze



936 ①
Tortoise Shell

Spectrum® Glazes Inc.

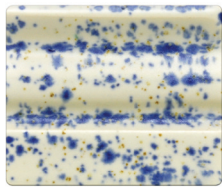
LEAD FREE
NON TOXIC*

900 Series Cone Low Stone Glazes

DINNERWARE SAFE
CONE 06/04



937 ①
Adobe



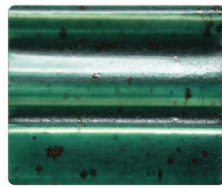
938 ①
Blue Rain



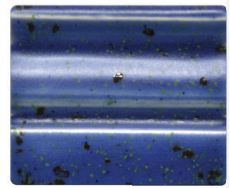
939 ①
Chocolate Chip



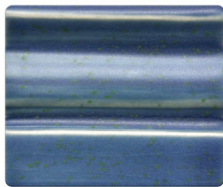
940 ①
Spotted Plum



941 ②
Dragonfly



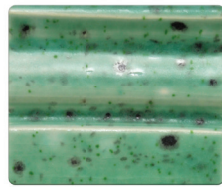
942 ①
Mediterranean



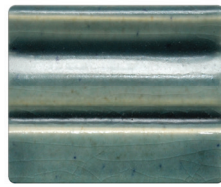
943 ①
Glacier



944 ①
Desert Wind



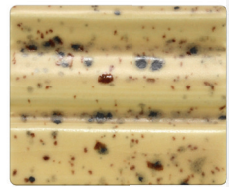
945 ②
Robin's Egg



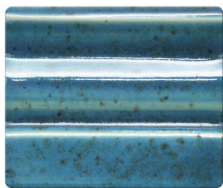
946 ②
Cadet Blue



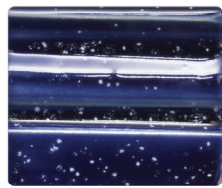
947 ②
Seagreen



948 ①
Tortilla



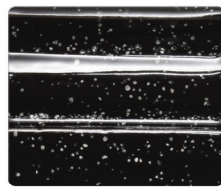
949 ②
Deep Sea



950 ①
Moonlit Sky



951 ⑤
Sunset Red



952 ①
Meteor Shower



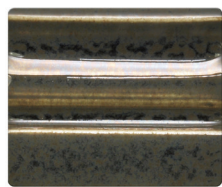
953 ①
Espresso



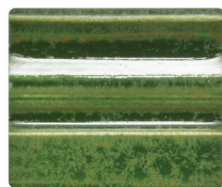
954 ②
Polished Armor



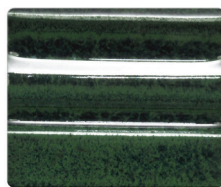
955 ①
Eggplant



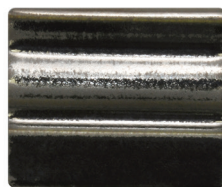
956 ②
Smoke'n'Mirrors



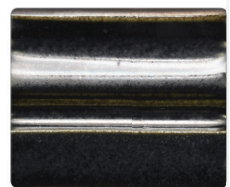
957 ①
Kelp Forest



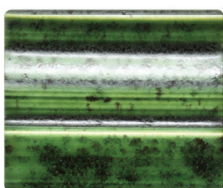
958 ①
Rainforest



959 ②
Tarnished Silver



960 ②
Gunmetal



961 ①
Bullfrog Green



962 ⑤
Phoenix Red

* EXCEPT 901, 902, 903, 912, 913, 932, 934, 941, 945, 946, 947, 949, 954, 956, 959, 960



① Dinnerware safe. Contains no lead or cadmium ingredients. Certified AP Non-Toxic and conforms to ASTM D-4236.



③ Contains no lead or cadmium ingredients. May invite bacteria growth due to glaze fissures. Not recommended for surfaces which contact food or drink. Certified AP Non-Toxic.



② Dinnerware safe. Contains some heavy metals and/or cadmium compounds but passes test for lead and cadmium release.



⑤ Dinnerware safe. Contains no lead. Contains encapsulated cadmium pigment. Certified AP Non-Toxic and conforms to ASTM D-4236

Note: In order for glazes labeled ①, ②, or ③ to be dinnerware safe, they must be fired to recommended firing temperature. In order for underglazes, one-strokes or RACs to be dinnerware safe, they must be covered with a dinnerware safe clear glaze such as Spectrum 700 and fired to the recommended firing temperature of the glaze.

Caution: None of these products should be taken internally. Contain ingredients not suitable for ingestion or inhalation.

www.spectrumglazes.com