

# Spectrum<sup>®</sup> Glazes Inc.

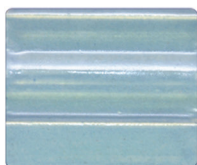
LEAD FREE  
NON TOXIC\*

## 1100 Series Stoneware Glazes

HI-FIRE  
CONE 5



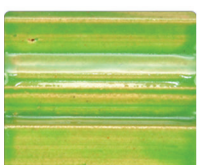
1100 ①  
Transparent



1102 ①  
Wedgwood



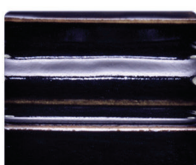
1103 ①  
Dusty Rose



1104 ①  
Grass Green



1106 ①  
Crimson



1107 ①  
Black



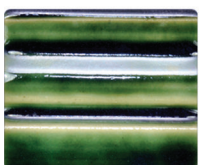
1108 ①  
Butter Yellow



1109 ①  
Coral



1110 ①  
Turquoise



1111 ②  
Holly Green



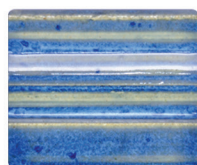
1112 ②  
Gold



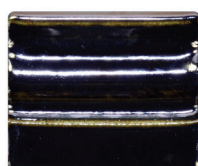
1113 ①  
Milk'n'Honey



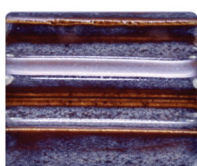
1114 ②  
Gold Rain



1115 ①  
Moonscape



1116 ②  
Mirror



1117 ①  
Text. Chocolate



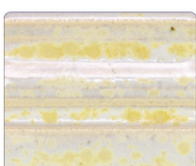
1118 ①  
White



1120 ①  
Satin Clear



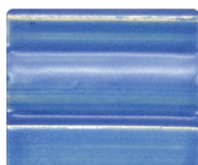
1121 ①  
Satin White



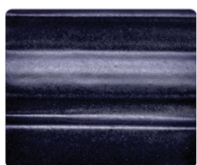
1122 ①  
Satin Mottle



1123 ①  
Satin Speckle



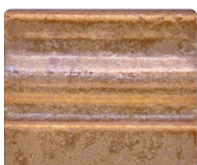
1124 ①  
Satin Wedgwood



1126 ①  
Satin Black



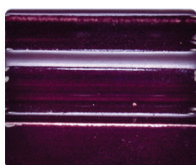
1127 ①  
Satin Turquoise



1129 ①  
Text. Oasis



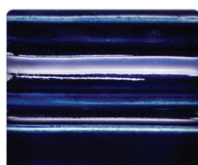
1131 ①  
Charcoal



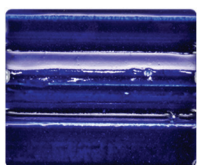
1132 ①  
Purple



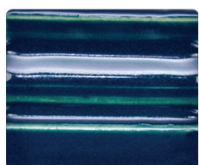
1134 ①  
Choc. Brown



1135 ①  
Navy Blue



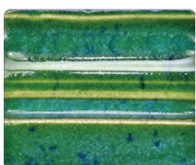
1136 ①  
Royal Blue



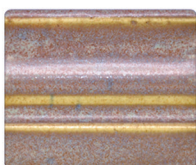
1137 ①  
Teal Blue



1138 ①  
Lime Green



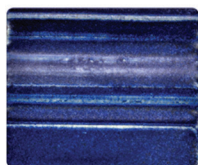
1140 ①  
Text. Kiwi Fruit



1141 ①  
Text. Cascade



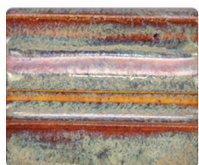
1142 ①  
Text. Wheat



1143 ①  
Text. Navy



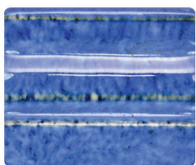
1144 ①  
Text. Mottle



1145 ①  
Text. Autumn



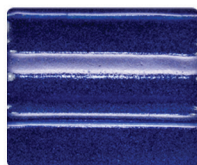
1146 ①  
Text. Swampy



1147 ①  
Delft Blue



1148 ②  
Text. Chowder



1149 ①  
Oceanic Blue

\* EXCEPT 1111, 1112, 1114, 1116, 1148, 1152, 1153, 1154, 1157, 1158, 1159, 1161, 1162, 1172, 1173, 1188, 1198

Caution: None of these products should be taken internally. Contain ingredients not suitable for ingestion or inhalation.

[www.spectrumglazes.com](http://www.spectrumglazes.com)

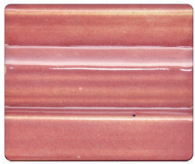


# Spectrum® Glazes Inc.

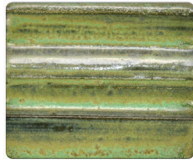
LEAD FREE  
NON TOXIC\*

## 1100 Series Stoneware Glazes

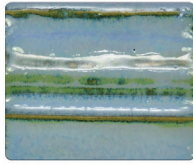
HI-FIRE  
CONE 5



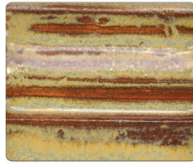
1151 ①  
Fuschia



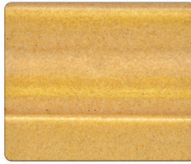
1152 ②  
Text. Chrome



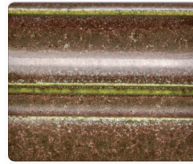
1153 ②  
Text. Cobalt



1154 ②  
Text. Iron



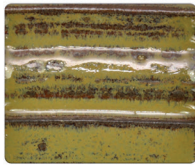
1155 ①  
Pebble Stone



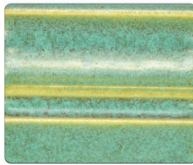
1156 ①  
Olive Stone



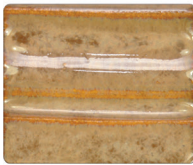
1157 ②  
Text. Honey



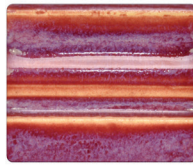
1158 ②  
Text. Bronze



1159 ②  
Green Stone



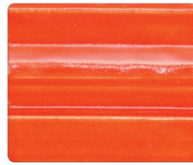
1161 ②  
Text. Topaz



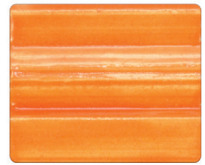
1162 ②  
Text. Burgundy



1164 ⑤  
Dark Red



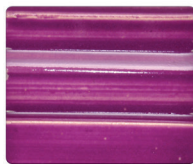
1165 ⑤  
Bright Red



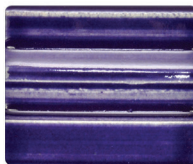
1166 ⑤  
Bright Orange



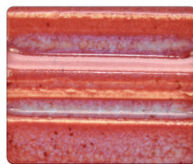
1167 ①  
Bright Green



1168 ①  
Bright Purple



1169 ①  
Dark Purple



1170 ①  
Text. Mulberry



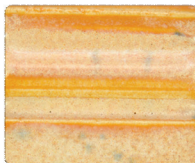
1171 ①  
Text. Plum



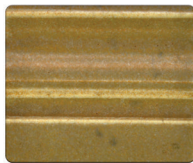
1172 ②  
Text. Leopard



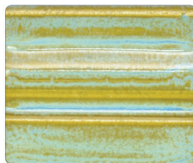
1173 ②  
Run. Chowder



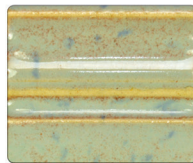
1176 ①  
Cinnamon



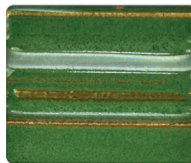
1177 ①  
Antique Mottle



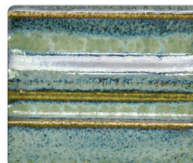
1180 ①  
Lagoon



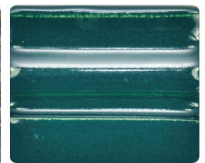
1181 ①  
Text. Cloudburst



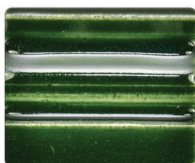
1182 ①  
Text. Jungle



1183 ①  
Dark Cloud



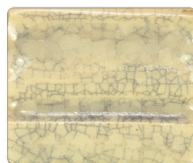
1184 ①  
Hunter Green



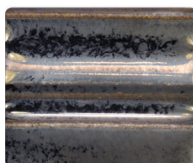
1185 ①  
Forest Green



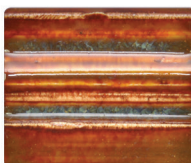
1186 ⑤  
Soft Pink



1187 ③  
Clear Crackle



1188 ②  
Pewter



1191 ①  
Muddy Waters



1192 ①  
Reactive Purple



1193 ⑤  
Fire Engine Red



1194 ⑤  
Christmas Red



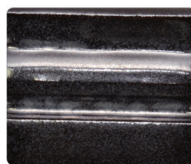
1195 ⑤  
Neon Orange



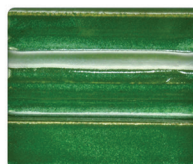
1196 ⑤  
Hot Pink



1197 ⑤  
Reactive Red



1198 ②  
Oil Spot



1199 ①  
Text. Mossy



① Dinnerware safe. Contains no lead or cadmium ingredients. Certified AP Non-Toxic and conforms to ASTM D-4236.



② Dinnerware safe. Contains some heavy metals and/or cadmium compounds but passes test for lead and cadmium release.



③ Contains no lead or cadmium ingredients. May invite bacteria growth due to glaze fissures. Not recommended for surfaces which contact food or drink. Certified AP Non-Toxic.



⑤ Dinnerware safe. Contains no lead. Contains encapsulated cadmium pigment. Certified AP Non-Toxic and conforms to ASTM D-4236

Note: In order for glazes labeled ①, ②, or ⑤ to be dinnerware safe, they must be fired to recommended firing temperature. In order for underglazes, one-strokes or RACs to be dinnerware safe, they must be covered with a dinnerware safe clear glaze such as Spectrum 1100 and fired to the recommended firing temperature of the glaze.